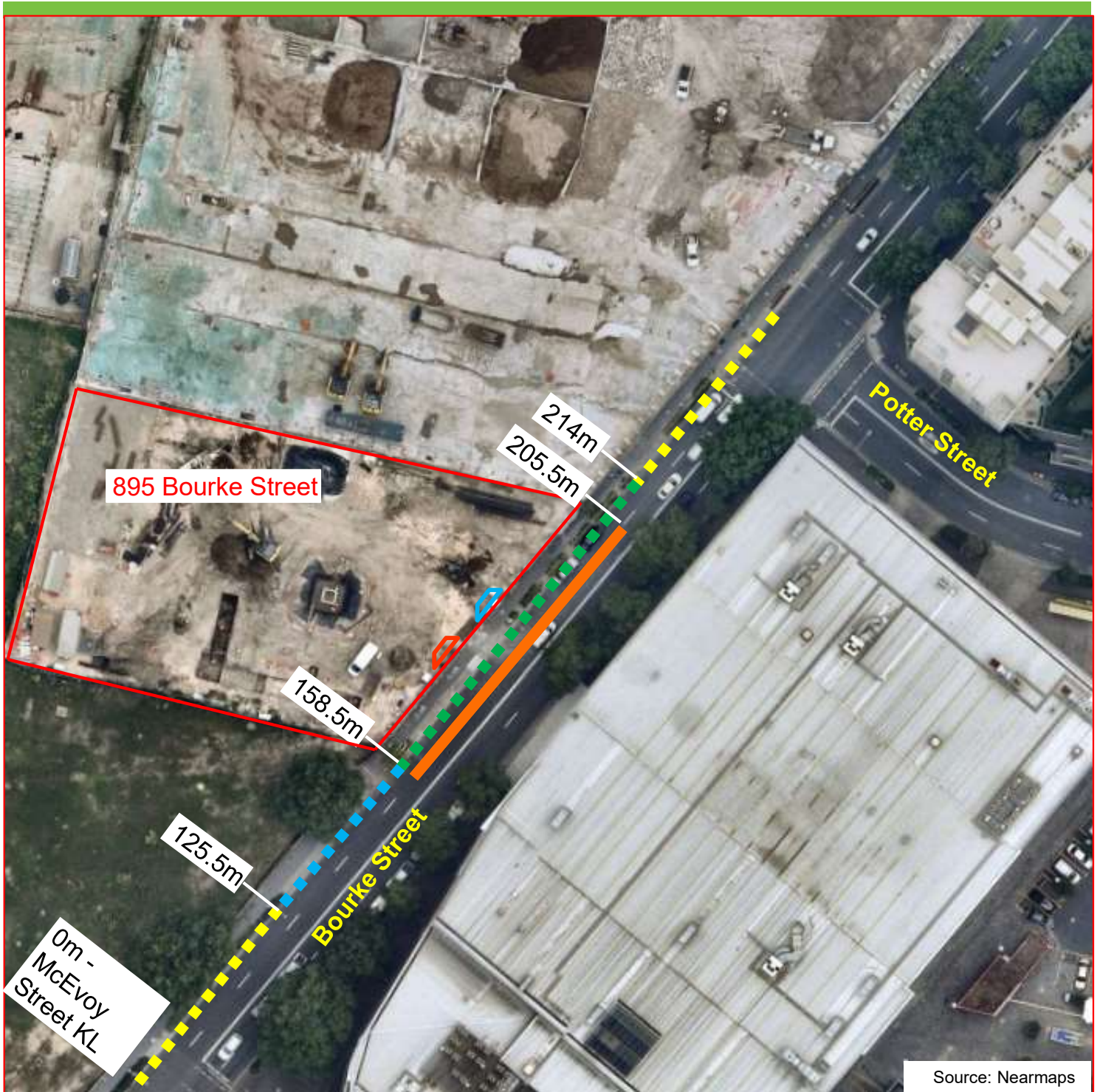






## Bourke Street Waterloo Proposed Works Zone



### Existing

-  "No Stopping"
-  "No Stopping 6am-10am Mon-Fri" and "2P 10am-5pm Mon-Fri, 8.30am-12.30pm Sat"
-  Bus Zone
-  Existing Driveway

### Proposed

-  "No Stopping 6am-10am Mon-Fri" and "Works Zone 10am-5.30pm Mon-Fri, 7.30am-3.30pm Sat"
-  New Driveway